

Applicable to models:

H2055

H2055 cod. 408328 B**Parts list modification**

We inform you that the transformer and its accessories (fig 34, 35, 36, 37) that appear in the parts drawing page 6, of H2055 washer-extractor parts list, code n° 408328 B, rev n° 00/0503, does not belong to this parts assembly of the washer, it was included by error.

We have re-designed the parts assembly and have corrected the list removing these parts and the corresponding denomination (enclosed copy in PDF format).

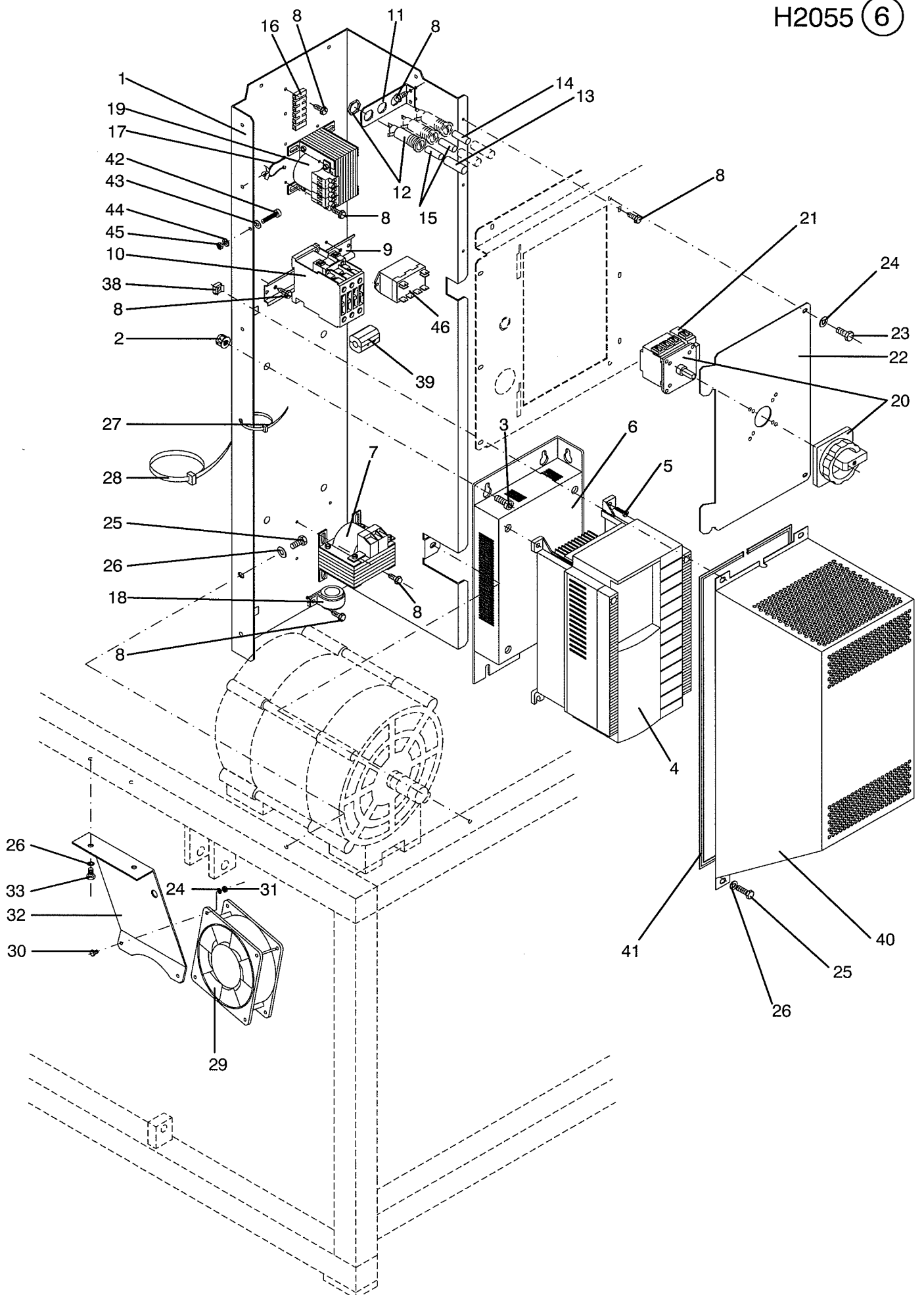
In addition, we have modified the material and part no. of position 18. The new reference is 140418 Clamp Unex ref. 1201.

GIRBAU,S.A

Crta. Manlleu, km. 1
08500 Vic (Barcelona)
SPAIN
Tel. (34) 93 886 1100
Fax (34) 93 886 0785

girbau@girbau.es

www.girbau.com



Nº	REF.	DENOMINATION	DENOMINACIÓN	DÉNOMINATION
1	409060	CONVERTER INSTALLATION PLATE	PLACA INSTALACION CONVERTIDOR	PLAQUE INSTALL.CONVERTISSEUR
2	183541	CYLIN. NUT M5 R-310077-3	TUER.ENJ.M5 CILINDR.R-310077-3	ECROU M5 CYLIN. R-310077-3
3	144261	ALLEN SCREW DIN 912 M-5X10	TOR.ALLDIN912-8.8 BICR.M 5X 10	VIS ALLEN DIN 912 M-5X10
4	318790	CONVERTER FRN 2.2 G11S-4EN (FOR THREE-PHASE) (FOR 380-400-415-440-480V)	CONVERTIDOR FRN 2.2 G11S-4EN (PARA TRIFASICO) (PARA 380-400-415-440-480V)	CONVERTISSEUR FRN 2.2 G11S-4EN (POUR TRIPHASE) (POUR 380-400-415-440-480V)
	314948	CONVERTER FVR 2.2 C11S-7WM (FOR SINGLE-PHASE) (FOR 200-208-220-230-240V)	CONVERTIDOR FVR 2.2 C11S-7WM (PARA MONOFASICO) (PARA 200-208-220-230-240V)	CONVERTISSEUR FVR 2.2 C11S-7WM (POUR MONOPHASE) (POUR 200-208-220-230-240V)
	327551	CONVERTER FRN 2,2 G11S-2JE (FOR THREE-PHASE) (FOR 200-208-220-230-240V)	CONVERTIDOR FRN 2.2 G11S-2JE (PARA TRIFASICO) (PARA 200-208-220-230-240V)	CONVERTISSEUR FRN 2,2 G11S-2JE (POUR TRIPHASE) (POUR 200-208-220-230-240V)
5	146126	BICR CYL SCREW DIN84-4 M-5X15	TOR.CIL.DIN84-4.8 BICR.M 5X15	VIS CYL BICR DIN84-4.8 M-5X15
6	318832	FILTER TP.-4.0G11-4 (FOR THREE-PHASE)	FILTRO TIPO EFL-4.0G11-4 (PARA TRIFASICO)	FILTRE TP.RFL-4.0G11-4 (POUR TRIPHASE)
	314955	FILTER EFL-2,2C11-7 (FOR SINGLE-PHASE)	FILTRO TIPO EFL-2.2C11-7 (PARA MONOFASICO)	FILTRE EFL-2.2C11-7 (POUR MONOPHASE)
7	318808	INDUCTANCE DCR002 (FOR THREE-PHASE) (FOR 220-230V 50HZ 1PH)	INDUCTANCIA DCR002 (PARA TRIFASICO) (PARA 220-230V 50HZ 1PH)	INDUCTANCE DCR002 (POUR TRIPHASE) (POUR 220-230V 50HZ 1PH)
	318295	INDUCTANCE DCR001 (FOR SINGLE-PHASE) (EXCEPT FOR 220-230V 50HZ 1PH)	INDUCTANCIA DCR001 (PARA MONOFASICO) (EXCEPTO 220-230V 50HZ 1PH)	INDUCTANCE DCR001 (POUR MONOPHASE) (SAUF POUR 220-230V 50HZ 1PH)
8	183400	CYL.PLATE SCREW ST-4 20 C/AL	TOR.CHAPA ST-4 20 C/AL.T25	VIS PLAQUE CYL.ST-4 20 C/AL
9	209239	CONTACTORS FIXING PROFILE	PERFIL FIJACION CONTACTORES	PROFILE FIXATION CONTACTEURS
10	320846	CONTACTOR 3RT10 24-1AL2 (FOR THREE-PHASE)	CONTACTOR 3RT10 24-1AL2 (PARA TRIFASICO)	CONTACTEUR 3RT10 24-1AL2 (POUR TRIPHASE)
	321240	COIL 3RT1924-5AL21 230-50/60 (FOR THREE-PHASE)	BOBINA 3RT1924-5AL21 230-50/60 (PARA TRIFASICO)	BOBINE 3RT1924-5AL21 230-50/60 (POUR TRIPHASE)
11	281691	FUSE BRACKET	SOPORTE FUSIBLES	SUPPORT FUSIBLES
12	160119	FUSE HOLDER REF.FEC 031 1631	PORTAFUSIBLES REF.FEC.031.1631	PORTE-FUSIBLE REF.FEC 031 1631
13	137661	BAYONET HEAD	CABEZA BAYONETA FEK.031.1613	TETE BAYONETTE
14	321125	FUSE SPT 1 A	CART.FUSIB.SPT 0001.2524 1 A	CARTOUCHE FUS. SPT 1 A
15	321125	FUSE SPT 1 A (FOR 200-208-220-230-240V)	CART.FUSIB.SPT 0001.2524 1 A (PARA 200-208-220-230-240V)	CARTOUCHE FUS. SPT 1 A (POUR 200-208-220-230-240V)
	319152	FUSE SPT 0001.2521 0,5A (FOR 380-400-415-440-480V)	CART.FUSIB.SPT 0001.2521 0,5A (PARA 380-400-415-440-480V)	CARTOUCHE FUSIBLE SPT (POUR 380-400-415-440-480V)

N°	REF.	DENOMINATION	DENOMINACIÓN	DÉNOMINATION
16	318147	CONNECTION-BOARD PA-329L (12 UNITS)	REGLETA PA-239L/12POLOS WP (12 ELEMENTOS)	REGLETTE PA-329L/12POLES WP (12 UNITÉS)
17	199893	CLAMP STL-450-3-01	ABRAZADERA STL-450-3-01	BRIDE STL-450-3-01
18	140418	CLAMP UNEX REF 1201	BRIDA UNEX 1201	BRIDE UNEX REF 1201
19	320614	TRANSFORMER IP00 100 VA (FOR 200-208-220-230-240V)	TRANSFORMADOR IP00 100 VA (PARA 200-208-220-230-240V)	TRANSFORMATEUR IP00 100 VA (POUR 200-208-220-230-240V)
	320218	TRANSFORMER IP 100 VA (FOR 380-400-415-440-480V)	TRANSFORMADOR IP00 100 VA (PARA 380-400-415-440-480V)	TRANSFORMATEUR IP00 100 VA (POUR 380-400-415-440-480V)
20	320879	PAQUET.SWITCH 3LD21030TK53	INTERRUP.PAQUET.3LD2 103-0TK53	INTERUPTEUR P.3LD2 103-0TK53
21	320895	TERMINAL PE 3LD9220-2B	BORNE PE 3LD9220-2B	BORNE PE 3LD9220-2B
22	408104	CURRENT INPUT COVER	TAPA ENTRADA CORRIENTE	COUVERCLE ENTRÉE DE COURANT
23	146084	BICR CYL SCREW DIN84 M 4X 10	TOR.CIL.DIN84-4.8 BICR.M 4X10	VIS CYL BICR DIN84-4.8 M 4X 10
24	149476	BICR.WASHER B DIN125-ST 4,3	ARAN.B DIN125-ST BICR. 4,3	RONDELLE B DIN125-ST BICR.4,3
25	146233	BICR.HEX SCREW DIN933-8 M6X15	TOR.EX.DIN933-8.8 BICR.M 6X 15	VIS HEX DIN933-8.8 BICR.M6X15
26	149526	BICR.WASHER B DIN125-ST 6,4	ARAN.B DIN125-ST BICR. 6,4	RONDELLE B DIN125-ST BICR.6,4
27	140525	CLAMP 2244-0	BRIDA UNEX 2244-0	BRIDE 2244-0
28	140533	CLAMP 2271-0	BRIDA UNEX 2271-0	BRIDE 2271-0
29	147884	FAN 120X120C38 220-240V	VENTILADOR 120X120X38 220-240	VENTILATEUR 120X120C38 220-240
30	146258	BIC.HEX SCREW DIN933-4.8 M4X10	TOR.EX.DIN933-4.8 BICR.M 4X 10	VIS HEX DIN933-4.8 BICR.M 4X10
31	150185	BICR.HEX.NUT DIN934-8 M4	TUER.EX.DIN934-8 BICR.M 4	ECROU HEX.DIN934-8 BICR.M4
32	291286	FAN BRACKET	SOPORTE VENTILADOR	SUPPORT VENTILATEUR
33	165621	BIC HEX SCREW DIN933-8,8 M6X10	TOR.EX.DIN933-8.8 BICR.M 6X 10	VIS HEX DIN933-8,8 BICR M6X10
38	321117	NUT ENJ.M6 1,6-2,5 R.310008-7	TUER.ENJ.M6 1,6-2,5 R.310008-7	ECROU ENJ.M6 1,6-2.5 R310008-7
39	321166	FERRITE SPLIT RFC-9	FERRITA SPLIT RFC-9	FERRITE SPLIT RFC-9
40	409243	CEM BOX (PROFILE INCLUDED)	CAJA CEM (INCLUYE PERFIL)	BOÎTE CEM (COMPRIS PROFILE)
41	321273	PROFILE E0819T00000 UL94HB (1 METER)	PERFIL E0813T00000 UL94HB (1 METRO)	PROFILE E0819T00000 UL94HB (1 METRE)
42	144295	BICR.SCREW ALLEN912-8.8 M 5X25	TOR.ALLDIN912-8.8 BICR.M 5X 25	VIS ALLDIN912-8.8 BICR.M 5X 25
43	149534	BICR.WASHER B DIN125-ST 5,3	ARAN.B DIN125-ST BICR. 5,3	RONDELLE B BICR.DIN125-ST 5,3
44	149724	BICR EXT.TOOT.WASH.DIN6798 M5	ARAN.DEN.EXTER.BICR.DIN6798M 5	RONDEL DEN.EX.BICR.DIN6798 M5
45	150177	BICR HEX NUT DIN934-8 M5	TUER.EX.DIN934-8 BICR.M 5	ECROU HEX DIN934-8 BIC.M5

N°	REF.	DENOMINATION	DENOMINACIÓN	DÉNOMINATION
46	318840	IND.RELAY G7L-2A-TUB 200-240V (FOR SINGLE-PHASE)	RELE IND.G7L-2A-TUB 200-240VAC (PARA MONOFASICO)	RELAIS IND.G7L-2A-TUB 200-240V (POUR MONOPHASE)